

Helpful numbers:

DV Connect

Womensline – 1800 811 811

Mensline – 1800 600 636

Sexual Assault Helpline

1800 737 732

Child Safety After Hours

1800 177 135

Homeless Hotline – 1800 474 753

Poisons Helpline – 13 11 26

13HEALTH – 13 43 25 84

Policelink – 131 444

In an emergency contact

000 (112 for mobiles)

Mental health crisis numbers:

Mental Health Support Line

(MH CALL) – 1300 64 22 55

Lifeline – 13 11 14

Suicide Call Back Service

1300 659 467

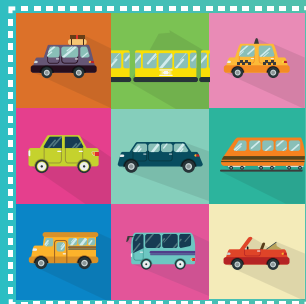
Kids Helpline (5-25yrs)

1800 551 800



openminds

Mental Health, Disability &
Specialised Supports



Transport Card

www.openminds.org.au

Transport Suggestions



Our Support Workers can help you to use a variety of transport methods which will help you get around on your own whenever you like, not just when you have a Support Worker.

For a full list of Registered NDIS Transport Providers, please visit the **PRODA** website. Your Care Leader can help you with this if you need assistance.

Here are some suggestions to get you started:

Public Transport

Concession Card holders are eligible for discounted travel on Bus, Train and Ferry services.
www.translink.com.au/tickets-and-fares/concessions

Taxi options

Yellow Cabs

Registered NDIS Transport Providers
(07) 3391 5955
www.yellowcab.com.au/ndis/

Black and White Taxis

Registered NDIS Transport Providers
blackandwhitetcabs.com.au/ndis/

QLD Taxi Subsidy Scheme

1300 134 755
www.qld.gov.au/disability

Community Transport Options

Many Councils and local areas offer transport to and from and shopping centres and medical services. Your Local Council should be able to help you with this.

STAR Community Services

07 3821 6699
(Redlands, Logan, Ipswich, Gold Coast)

NDIS Registered TransitCare Community flyer

1300 153 636
(Brisbane South, Logan, Townsville)
www.transitcare.com.au

Redcliffe Community Bus

07 3284 6429

Hospital Transport services for appointments **QLD Ambulance Service** (patient transport)

13 12 33

The Carer Gateway is also a valuable tool to help you look at options in your area!

www.carergateway.gov.au